

**REGISTRAR'S REPORT - 2019/2020**

<b>Co-ed Spring Soccer League</b>	<b>2016/2017</b>	<b>2017/2018</b>	<b>2018/2019</b>	<b>2019/2020</b>
	2016 Spring	2017 Spring	2018 Spring	2019 Spring
<b>Parent-Tot</b>	25	21	16	10
<b>U5</b>	67	81	42	54
<b>U6</b>	96	82	85	70
<b>U7</b>	104	88	88	79
<b>U8</b>	139	97	68	42
<b>U9/10</b>	151	132	140	77
<b>U11/12</b>	104	100	74	58
<b>U13/14</b>	53			
<b>Subtotal</b>	<b>739</b>	<b>601</b>	<b>513</b>	<b>390</b>

Did not offer U13/U14 after Spring 2016.

Decrease expected as both Richmond FC and RGSA offer alternate non-spring league programming for selected teams.

<b>Other Spring Training Programs</b>	2016 Spring	2017 Spring	2018 Spring	2019 Spring
1st Touch Soccer Program (spring)				122
U9 Development		22	24	24
U10 Development		24	30	42
U11 Development		28	42	36
U12 Development		37	36	30
U13 Selects		37	38	29
U14 Selects		17	46	38
U15 Selects		34	32	25
U16/U17/U18 Selects		28	19	
U16 Selects				33
U17/U18 Selects				21
U9-U18 Goalkeeper		15	16	14
<b>Subtotal</b>		<b>242</b>	<b>283</b>	<b>414</b>

As spring training for fall/winter teams has become more standardized will include these numbers.

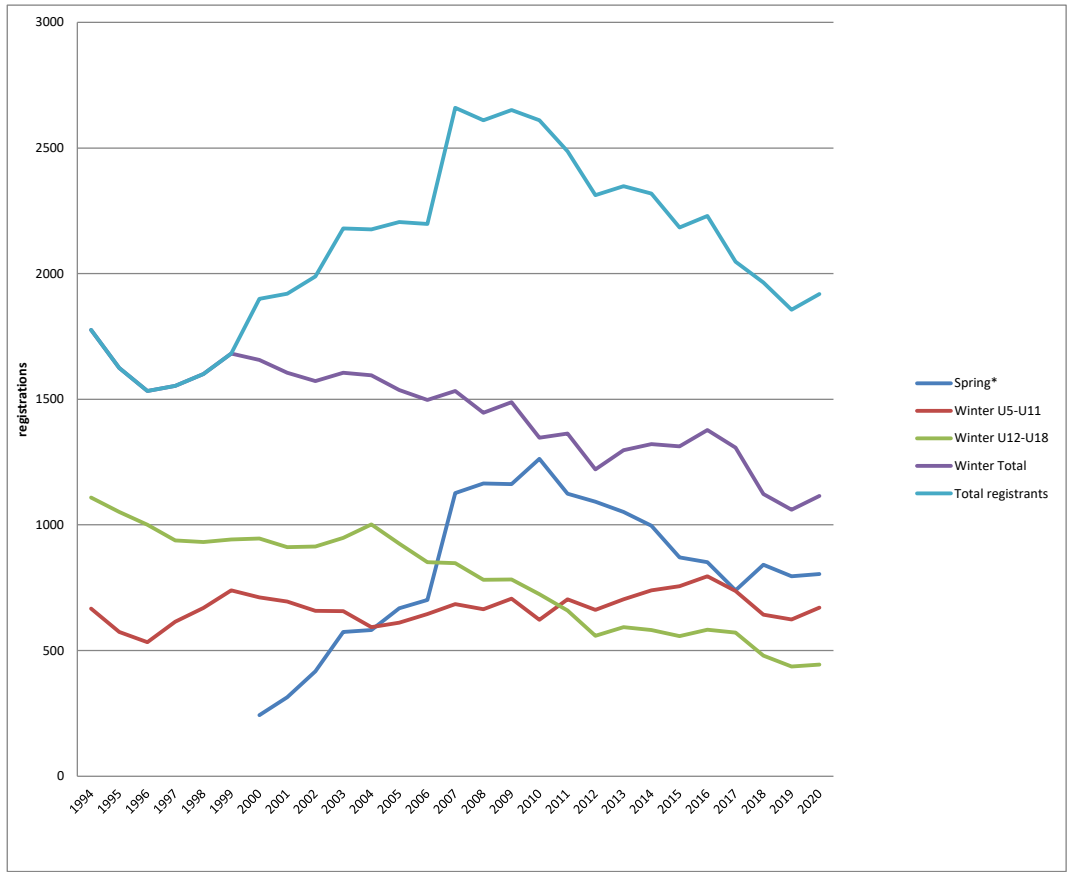
<b>Total Spring</b>	<b>739</b>	<b>842</b>	<b>796</b>	<b>804</b>
---------------------	------------	------------	------------	------------

<b>Boys Fall/Winter League</b>	<b>2016/2017</b>	<b>2017/2018</b>	<b>2018/2019</b>	<b>2019/2020</b>
<b>U5</b>	45	46	34	28
<b>U6</b>	65	72	71	62
<b>U7</b>	128	83	92	92
<b>U8</b>	133	116	83	90
<b>U9</b>	133	124	112	77
<b>U10</b>	126	109	117	122
<b>U11</b>	107	93	115	103
<b>U12</b>	118	84	82	134
<b>U13</b>	84	100	70	71
<b>U14</b>	93	67	68	54
<b>U15</b>	70	64	67	64
<b>U16</b>	82	53	50	52
<b>U17</b>	61	69	47	37
<b>U18</b>	63	43	53	32
<b>Subtotal</b>	<b>1308</b>	<b>1123</b>	<b>1061</b>	<b>1018</b>
1st Touch Soccer Program (fall/winter)				33
Indoor Soccer League				64
<b>Total Fall/Winter</b>				<b>1115</b>
<b>GRAND TOTAL</b>	<b>2047</b>	<b>1965</b>	<b>1857</b>	<b>1919</b>

Richmond FC - Historical Registration Figures

May 2020

Fiscal Year	1994	1995	1996	1997	1998	1999	2000	2001	2002	2003	2004	2005	2006	2007	2008	2009	2010	2011	2012	2013	2014	2015	2016	2017	2018	2019	2020
ending March 31,																											
Spring*							243	314	417	574	581	668	701	1127	1165	1162	1263	1124	1092	1051	997	871	851	739	842	796	804
Winter U5-U11	667	574	533	615	669	740	711	695	658	657	593	611	645	685	665	706	623	704	662	704	740	756	795	737	643	624	671
Winter U12-U18	1109	1051	1000	938	932	942	946	911	914	949	1002	926	852	848	781	783	724	659	559	593	582	557	583	571	480	437	444
Winter Total	1776	1625	1533	1553	1601	1682	1657	1606	1572	1606	1595	1537	1497	1533	1446	1489	1347	1363	1221	1297	1322	1313	1378	1308	1123	1061	1115
Total registrants	1776	1625	1533	1553	1601	1682	1900	1920	1989	2180	2176	2205	2198	2660	2611	2651	2610	2487	2313	2348	2319	2184	2229	2047	1965	1857	1919



\*effective 2017/2018 season Spring will now include spring training for selected teams