

REGISTRAR'S REPORT - 2020/2021

All 2020 Spring program cancelled due to Covid-19

Spring Soccer League	2016/2017	2017/2018	2018/2019	2019/2020	2020/2021
	2016 Spring	2017 Spring	2018 Spring	2019 Spring	2020 Spring
Parent-Tot	25	21	16	10	
U5	67	81	42	54	
U6	96	82	85	70	
U7	104	88	88	79	
U8	139	97	68	42	
U9/10	151	132	140	77	
U11/12	104	100	74	58	
U13/14	53				
<b>Subtotal</b>	<b>739</b>	<b>601</b>	<b>513</b>	<b>390</b>	

Other Spring Training Programs	2016 Spring	2017 Spring	2018 Spring	2019 Spring	2020 Spring
1st Touch Soccer Program (spring)				122	
U9 Development		22	24	24	
U10 Development		24	30	42	
U11 Development		28	42	36	
U12 Development		37	36	30	
U13 Selects		37	38	29	
U14 Selects		17	46	38	
U15 Selects		34	32	25	
U16/U17/U18 Selects		28	19		
U16 Selects				33	
U17/U18 Selects				21	
U9-U18 Goalkeeper		15	16	14	
Summer Pre-Season Training					236
Summer Camps					85
<b>Subtotal</b>		<b>242</b>	<b>283</b>	<b>414</b>	<b>321</b>

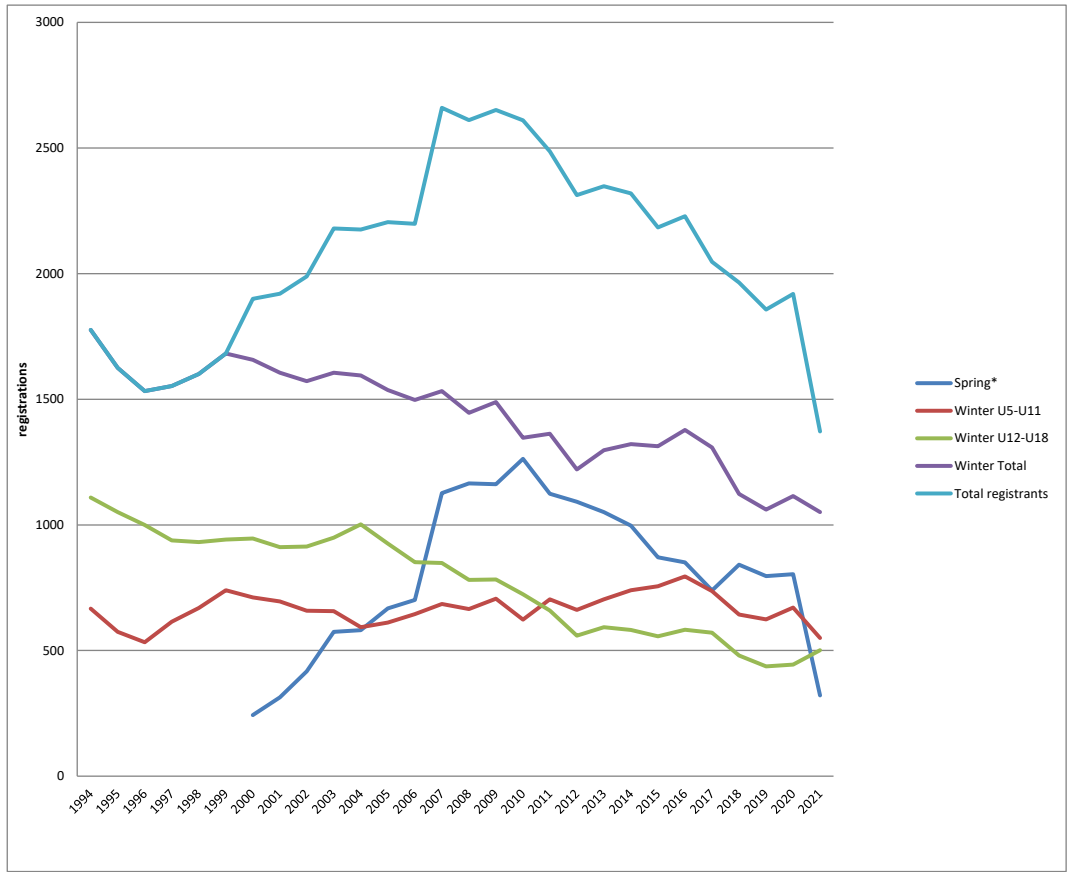
<b>Total Spring</b>	<b>739</b>	<b>842</b>	<b>796</b>	<b>804</b>	<b>321</b>
---------------------	------------	------------	------------	------------	------------

Fall/Winter League	2016/2017	2017/2018	2018/2019	2019/2020	2020/2021
U5	45	46	34	28	47
U6	65	72	71	62	49
U7	128	83	92	92	79
U8	133	116	83	90	80
U9	133	124	112	77	78
U10	126	109	117	122	66
U11	107	93	115	103	106
U12	118	84	82	134	93
U13	84	100	70	71	81
U14	93	67	68	54	63
U15	70	64	67	64	34
U16	82	53	50	52	54
U17	61	69	47	37	63
U18	63	43	53	32	21
Adult					51
<b>Subtotal</b>	<b>1308</b>	<b>1123</b>	<b>1061</b>	<b>1018</b>	<b>965</b>
1st Touch Soccer Program (fall/winter)				33	
Indoor Soccer League				64	
Finishing School					30
Development Academy					56
<b>Total Fall/Winter</b>				<b>1115</b>	<b>1051</b>
<b>GRAND TOTAL</b>	<b>2047</b>	<b>1965</b>	<b>1857</b>	<b>1919</b>	<b>1372</b>

Richmond FC - Historical Registration Figures

May 2021

Fiscal Year	1994	1995	1996	1997	1998	1999	2000	2001	2002	2003	2004	2005	2006	2007	2008	2009	2010	2011	2012	2013	2014	2015	2016	2017	2018	2019	2020	2021
ending March 31,																												
Spring*							243	314	417	574	581	668	701	1127	1165	1162	1263	1124	1092	1051	997	871	851	739	842	796	804	321
Winter U5-U11	667	574	533	615	669	740	711	695	658	657	593	611	645	685	665	706	623	704	662	704	740	756	795	737	643	624	671	550
Winter U12-U18	1109	1051	1000	938	932	942	946	911	914	949	1002	926	852	848	781	783	724	659	559	593	582	557	583	571	480	437	444	501
Winter Total	1776	1625	1533	1553	1601	1682	1657	1606	1572	1606	1595	1537	1497	1533	1446	1489	1347	1363	1221	1297	1322	1313	1378	1308	1123	1061	1115	1051
Total registrants	1776	1625	1533	1553	1601	1682	1900	1920	1989	2180	2176	2205	2198	2660	2611	2651	2610	2487	2313	2348	2319	2184	2229	2047	1965	1857	1919	1372



Year ending March 2021, Covid-19, no Spring 2020 programs.

**2020-2021 Fall/Winter - Girls and Boys**

Girls	114
Boys	851
	965